

BEACHMERE COMMUNITY GARDEN INC.

QUEENSLAND, AUSTRALIA

Welcome

The good dirt

Vol 5 November 2021

Hello and welcome to our latest newsletter. We have had some positive feedback regarding the new format and some suggestions to improve it as well. Thanks to all who commented, we will always strive to improve each issue.

While we wait for approvals for planned work, it's been great to see members maintain enthusiasm with our fundraising and networking with other local groups. There have been some exciting developments in this regard which will be discussed later in the issue.

We also have the first photo of OSCA (the composter) to show you. We told you he was big!

Just a reminder that the AGM is on the 24th of November from 6:30pm.

It will be held at the Community hall. Please come along and hear about our first year, the successes and failures and what we plan to achieve in 2022.

Finally, a big thank you to Jill who has agreed to take on the Treasurer position.

Enjoy the read and hopefully see you at the AGM.

Cheers,

The Committee

BCGI complies with all current Qld Health directives and requires that members and others attending BCGI meetings or events comply with these directives also.

Things we need

Large and small pots
Indigenous food plants
Fruit trees

Shipping container

People

New members

Building Certifier

Builder

Recycling Coordinator

Your help with

Raising plants

Garden logo

Fundraising

Important dates

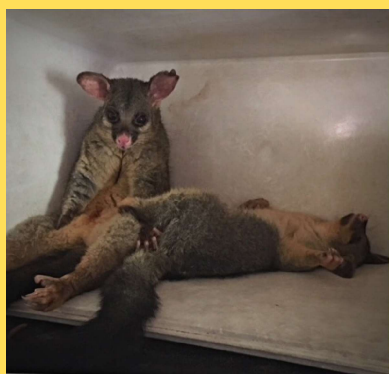
24th Nov AGM

6:30 pm @ Community Hall,
Progress Rd

4th Dec 8-11am Plant
Stall/Garage Sale on site

4th Dec 4-7pm
Christmas Bazaar
Clayton Park

Please note, we cannot accept donated plants that are poisonous or declared weed species. For more info, check out our plant selection criteria or contact us via email if you have plants to donate.



It's getting hot!

The seasons have definitely changed - it's getting hotter, muggier and the storms are rolling in. Look at ways to make the plants and animals in your garden more comfortable (such as water baths, shady areas). Remember, plants in pots are particularly vulnerable so why not install a wicking garden. These two were trying to cool down in an old esky.

I'm sure they are asking "where's the ice?"!