

BEACHMERE COMMUNITY GARDEN INC.

QUEENSLAND AUSTRALIA

Welcome

The good dirt

Vol 10 May 2022

Hello everyone and thanks for reading our latest newsletter. It is with equal parts relief and excitement that we can announce the final approval has been given to proceed with the community garden.

We recently received word from Council that the cultural heritage assessment report has been completed and it supports the project continuing on the site. Results from the test excavations found small amounts of material, primarily Cockle and Mud Ark shells. There are of course further cultural heritage requirements moving forward with the project, including undertaking cultural awareness training and showing a duty of care that any cultural heritage finds are reported and managed respectfully.

So what does this mean? Firstly, the construction of the garden can proceed and soon things will start to move quickly. Council is finalising tender documents for the concrete which will be the first section constructed. Other sections such as the arbour and shipping container anchors will be built soon after. For those of you who haven't seen the BCGI plan, we have included it in this issue. It also means we will be starting to do some actual gardening soon! We are going to be busy, so we are asking all members to spread the word. In particular, this 'Good Dirt' - pass on the newsletter to anyone you know who may be interested in the garden so they can get more of an idea of what we are trying to achieve - an inclusive community garden producing healthy, organic food.

A lot has been happening while waiting for this approval. We had a visit to a local community garden, continued with the Community Hall garden and tried our hand once more at the iconic Bunnings sausage sizzle. You can read about these later in the issue. Also, there are plenty of great events happening in the area this month. With the weather cooling off, why not pop along to one or all of them?

Finally, there is a great story about home made rosella jam and how by taking the plunge and starting something in motion, wonderful and unexpected results can follow.

Enjoy the read.

The Committee

**BCGI complies with all current
Old Health directives and requires
that members and others attending
BCGI meetings or events comply
with these directives also.**



FLOODS AT OTHER COMMUNITY GARDENS

One of the facts about some Community Gardens is they are located in areas of low value, not suitable for development, ie flood zones. Unfortunately, the recent floods have had a major impact on many local gardens including Northey Street City Farm and Taringa Community Garden (see main photo). TCG began their garden at about the same time as ours, managing to set up amazing accessible garden beds and a composting hub for locals to recycle their green waste. TCG have been very supportive and helpful to our garden.



The photo above is from when we visited last November and shows how the community garden looked before the floods. At one stage the flood waters were above the sign!

Gardeners are a resilient bunch though and the volunteers at TCG are working hard to get things cleaned up. We look forward to visiting again soon to see their progress and help out in any way we can.

Things we need

Feature pots

Indigenous food plants

Fruit trees

People

New members

Building Certifier

Recycling Coordinator

Your help with

Raising plants

Fundraising

Spreading the word

Important dates

1 - 7th May

Int Compost week

7th May

R and R party Beachmere
(See report on last page)

8th May

Mothers Day

14th May

Neighbourhood

Catholic Baptist Church
POSTPONED 11TH JUNE
Community Garden

22nd May General Meeting

3 pm @ Community Hall
Progress Rd, Beachmere

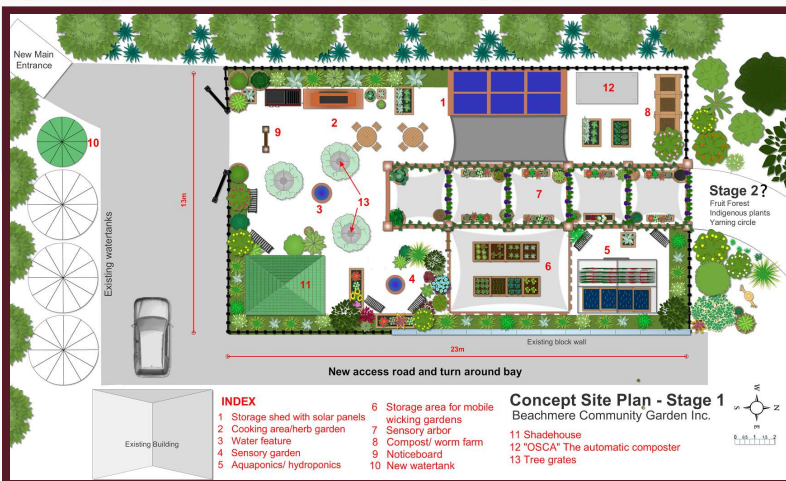
THERE WAS NO GARDEN
STALL ON SITE IN MAY DUE
TO THE R AND R PARTY ON THE
7TH MAY. WE HOPE TO HAVE
THIS BEGIN AGAIN IN
JUNE.



E: beachmerecommunitygarden@outlook.com W: beachmerecommunitygarden.com.au

FB: facebook.com/BeachmereCommunityGarden

BEACHMERE COMMUNITY GARDEN INC. SITE PLAN



Well here it is! This is what all the hard work, fundraising, meetings and planning over the last two years have been for - The Beachmere Community Garden plan.

While designed for function, we believe this will be a beautiful space for locals and visitors to not only learn about growing healthy food but a place to relax or meet. As we mentioned last issue, we have raised over \$90 000 to build this garden. Now that we have the majority of approvals from Council, things should start to happen very quickly. The main feature of the garden will be the central arbour that will be filled with sensory plants. Visitors will be encouraged to touch, smell, taste and listen to plants as they walk through. To each side are different sections that will illustrate practical ways to garden using organic principles.

If this is the first you have seen the plan, let us know what you think. We always appreciate feedback and ways to improve. Also, if you are a community group that could use this space when it is built, let us know. We would love to talk about how this space can be utilized by the whole community.

A school of knowledge is located in your backyard garden."

- Bert McCoy

COMMUNITY HALL GARDEN UPDATE



The screen has finally been installed (see photo), which means there is not much more to do at the Community Hall garden. We just need to install the prostrate Banksia feature and finish off some fencing and we can hand back the garden. Thanks to the Community Hall for giving us this opportunity to "dig in" while waiting for our garden to start.

We would also like to thank the Bribie Islander magazine for including an article on the Community Hall garden's progress as well as other things BCGI have been up to. Thanks for helping to spread the word.

BECOME A MEMBER OF BEACHMERE COMMUNITY GARDEN INC.

Have you thought about becoming a member of Beachmere Community Garden?

We now have a number of categories to offer, there's sure to be one to suit you!

Memberships available are: Adult, Junior and Family

Adult membership options: Voting, Volunteer and Supporter member.

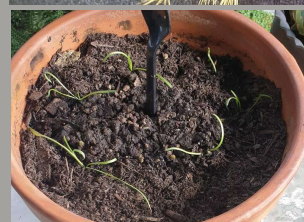
Check out the website for more info on becoming a member



The Bribie Islander

PLANTING UPDATE

Below are some photos of plants propagated by one of our members, Yvonne. They are Yam Daisies or Murnong, a valuable food plant for indigenous people. The seeds were collected from one of our stock plants and propagated in seed raising mix, then transplanted into the larger pot. We can't wait for them to grow and have a taste.



Just a reminder for members to keep propagating plants for the community garden. We will be needing more plants as we get the monthly garden stall running again and for our garden when construction begins. Let us know if you need seedlings, potting mix or pots. A big thank you to Dracaena Farm Nursery and Bribie Community Nursery for donating pots to the garden.

GARDENING AUSTRALIA

The 1st -7th is International Compost week. A great way of turning green waste into garden gold is having a worm farm. Costa explains how to keep your worms happy and productive.

Watch this and other great segments on the Gardening Australia website, ABC iview (Episode. 07, 2022). or 7:30pm Fridays on ABC



Image from Gardening Australia Website

E: beachmerecommunitygarden@outlook.com W: beachmerecommunitygarden.com.au

or FB: facebook.com/BeachmereCommunityGarden

CABOOLTURE BAPTIST CHURCH COMMUNITY GARDEN

BCGI was recently invited to the monthly meeting of the "Grant Rd Groundbreakers" at the Caboolture Baptist Church Community Garden. It was great to catch up with some familiar faces and meet some of their other members.

Like many local gardens, they were impacted by the floods but have managed to clean up and get growing again. Highlights of the visit were seeing the next crop of their famous loofa, talking to members about their garden plots and checking out the stingless bee hives.

Thanks again for the invite and we look forward to visiting the garden for our Neighbour Day celebration on the **11th June** (Postponed from 14th May).



Above: BCGI members admire the latest crop of loofa.

Left: Alan and Bruce with a stingless bee hive.

Below left: The garden crew

Thought on the seasons...



Didn't this pumpkin look at the calendar? It's Autumn-apparently it should be finishing its crop, not growing new fruit. Look to what's happening in nature, not just a date on a calendar. Nature will provide the signs that the weather is changing and it's the right time to plant your seasonal crops.



For more info about this community garden or the upcoming Neighbour Day event.
office@caboolturebaptist.org

A LESSON LEARNT IN THE GARDEN

Some of the rosella plants that BCGI members grew from seed at an earlier planting day ended up at the Bribie Community nursery veggie patch. After a tough summer of heat, humidity and floods, the plants survived to produce a great crop. Only problem was that no one knew how to make rosella jam!

Luckily, volunteer Chrissie, on her very first day at the nursery did and after harvesting the rosella, produced a delicious batch of jam for everyone to try on some hot cross buns. Chrissie is also going to try her hand at a choko chutney, making use of the large numbers growing in the garden. Isn't it amazing how things work out? But it all depends on having a go, starting something and setting things in motion. The fruits (and jam) of your labour will follow!



ACCESS ATTITUDE CHOICE PARTNERSHIPS COMMUNICATION POLICY OPPORTUNITY

We continue our series of articles explaining the seven pillars of inclusion and how they are a practical tool to help us with our goal of making Beachmere Community Garden inclusive to the whole community. Today's pillar is Attitude.

Attitudes are often cited as the biggest barrier to inclusion*

More than good intentions- I'm sure if asked, we would all say we would have a good attitude to promoting Inclusion in our community garden. But how do we really know if this is the case?

The truth is that most people's good intentions don't often translate into action*

Making a commitment So how do we improve? Firstly, by stating in all of the group's policies and documents that we commit to a more inclusive community. At BCGI, we have incorporated statements of commitment into our official policies and guiding principles. New members understand from the very start that this is the group's attitude to Inclusion. It is a condition of membership to abide by our guiding principles, however, we hope that they are not just seen as a rule to be followed but a positive intention to be embraced and championed.

Put things into practice Words on a piece of paper or spoken in a meeting only go so far. Practical steps will lead to real change. An example of this is running an event. Events targeting specific community groups will provide excellent information on how inclusive you really are. As we build the garden, we plan to hold many such events.

Feedback. Perhaps the most important part. We must be willing to listen to others and accept that there is always room for improvement. And finally, show positive intentions to put the feedback into action. We all need to remember:

It's what happens on the ground...reflecting the community we are in... that really matters*

If you have any suggestions on making the community garden more inclusive or you have seen great examples elsewhere, please let us know so we can spread the word. For more information on attitude, check out the link below:

<https://www.playbytherules.net.au/got-an-issue/inclusion-and-diversity/inclusion-and-diversity-what-can-you-do/attitude>

*Quotes taken from video by Peter Downs - The Inclusion Club.

We recommend you watch the video in the link provided below explaining the importance of a group's attitude to being inclusive



E: beachmerecommunitygarden@outlook.com W: beachmerecommunitygarden.com.au



After the devastation of the recent floods, BANG decided to host an event on the 7th May to say thank you to all the amazing people who helped Beachmere pull through and recover. Thankfully, the rain held off for most of the day, with an appreciative crowd enjoying great live music, tasty food, classic cars and market stalls.

The BBQ was organised and run by various Beachmere community groups: BANG, U3A, Classic Car Club, Men's Shed, Bowls Club, Indoor Bowls club, Community Association, Lions Club and us. It was great to see all the groups work together, have a laugh and get to know each other a bit better.

Special thanks to Barb from Beachmere U3A for organising the local groups and BANG for once again putting on a fantastic event for the Beachmere community.



Sunday, 24th April saw BCGI tackle another Bunnings sausage sizzle. And what a day it was! Moving the stall back to the front entrance saw a marked increase in customers. The BBQ aroma and friendly helpers lured the most patrons yet.

Overall we sold around \$2400 worth of sausages and drinks for a profit of \$1700. Special mention must go to Jill who kept the day going with 3 shop runs to buy more supplies!

A big thank you to Barb, Gordon and Craig from Beachmere U3A and Helen (again) for helping us out on the day. Also, thanks to Leigh from Bunnings for looking after us. Finally, Meat City (cheers for the donated sausages) and IGA Beachmere for helping organise supplies on very short notice. Well done all!



THIS MONTH'S COVER PHOTO

Food waste is such a big issue in Australia. There are great organisations like Oz Harvest and Second Bite that are tackling this issue and that you can support. You can also do your part by learning to preserve foods. You'll also be recycling glass jars. Win win! www.ozharvest.org www.secondbite.org



CONTAINERS FOR CHANGE

HELPING TO RAISE FUNDS FOR BCGI IS AS EASY AS 1, 2, 3 !



1

Collect eligible containers



2

Take them to your nearest container refund point



3

Donate the refund to BCGI

PLEASE USE THE ID CODE:

C10510815

if you would like to donate your recycling to our fundraising efforts.



PHOTO OF THE MONTH
It's a dragonfly eat dragonfly world! By David

SUPPORT THE BUSINESSES AND GROUPS SUPPORTING US

It has been amazing to see the generous support from many local (and not so local) governments, businesses and community groups that are helping to get this project off the ground.

Wherever possible please support them in return



Beachmere



Cr Mark Booth
Div 2



Green Door Bowen Therapy
Top2Toe Massage
Aware Lifestyle
Flamingos Ice Creamery
Q Tank
Dracaena Farm Nursery



Pelican Business Services

Collectors Corner Nursery

KEV & KEN
THE FLOWER POT MEN



MAY 8TH.

E: beachmerecommunitygarden@outlook.com W: beachmerecommunitygarden.com.au