



Welcome



The good dirt

Vol 19 March 2023

Things we need

Feature pots

Indigenous food
plants

Fruit trees

Wicker baskets

People

New members

Your help with

Raising plants

Fundraising

Spreading the word!

Important dates

4th Mar

Beachmere District
Community Markets
(see flier on last page)

5th Mar

Clean Up Australia Day

22nd Mar

World Water Day

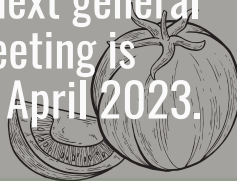
25th Mar

WWF Earth Hour

26th Mar

Arvo in the garden
Onsite from 3pm

The next general
meeting is
23rd April 2023.



**BCGI acknowledges and
pays our respects to the
traditional custodians of
Country throughout
Australia and to elders
past, present and
emerging.**

Hello and thanks for reading. Welcome to Autumn! Welcome to (hopefully) cooler days and nights after a fairly grueling summer! Our home gardens have certainly required a bit of extra help and at the Beachmere District Community Market this month, we are looking forward to chatting with you at our stall, sharing what's happening in gardens, what's doing well, what hasn't and getting your tips. We all learn so much from each other.... one of the most satisfying aspects of a Community Garden is the opportunity to participate in a wholesome, beneficial activity enjoyed by all. And the realisation of the Beachmere Community Garden is growing even as we speak. The arbour posts are in place, looking stunning! Our State Member Terry Young, a great supporter, recently visited and met with some of the generous businesses involved in the construction. It was such a pleasure to see the site bustling with activity, members and their families appreciating the progress and enjoying the shade on a hot afternoon.

At Beachmere State School, the children returned after holidays to find their garden beds weeded and watered by our dedicated members, ready to plant their next crop. This week they will be discovering two types of radishes sprouting, Oriental and Cherry Bell, and Yvonne is gathering a diverse lot of seeds for the next crop... including mustard greens and quick growing peas and beans. We'll have more on this garden in coming issues. You'll be amazed at the variety of edibles grown by the pupils.

A big thank you to local cafes (Silver Spoon, The Beach Shak and Black Cat) for saving their plastic bottle tops, which are collected by our members, and forwarded for ultimate recycling - into synthetic limbs for children. Wonderful to see so many people doing their bit towards maintaining a healthy, vibrant community.

In this newsletter we report on our first Arvo in the Garden, Clean up Australia Day and World Water Day, as well as featuring a visit to Jill's tropical garden. You'll find photographs of some of the plants currently flourishing in the area too. In spite of the weather, a garden remains a source of such surprise and delight. Climbing spinach is a top favourite at the moment. Let us know what's doing well at your place, when you pop in to the markets next. Finally, don't forget to check our website for news of upcoming events.

Enjoy the read. *The Committee*

Please pass this newsletter on to
anyone who may be interested

Arvo in the Garden 26th Feb

It's hard to believe, but the BCGI members' vision for a welcoming, inclusive garden for the whole community is becoming a reality. After a busy few months of construction, we are at the point of beginning to enjoy the space. Federal member Terry Young and his wife Alex, Kathy and Cobus from Fulton Hogan and Pete and Lisa from Red Dog Steel fabrication popped in as well to check on progress. It was also great to see so many garden members enjoying themselves on site. We look forward to many more afternoons like this in the future.



JILL'S GARDEN BY DARLA

Like the backstage crew of a movie set or stage show, the Beachmere Community Garden is a repository of quiet achievers, all with their individual talents and interests, shunning the limelight... meshing their efforts into the common and cherished goal of a Community Garden in Beachmere. Well, it's time a light was shone on some of them!

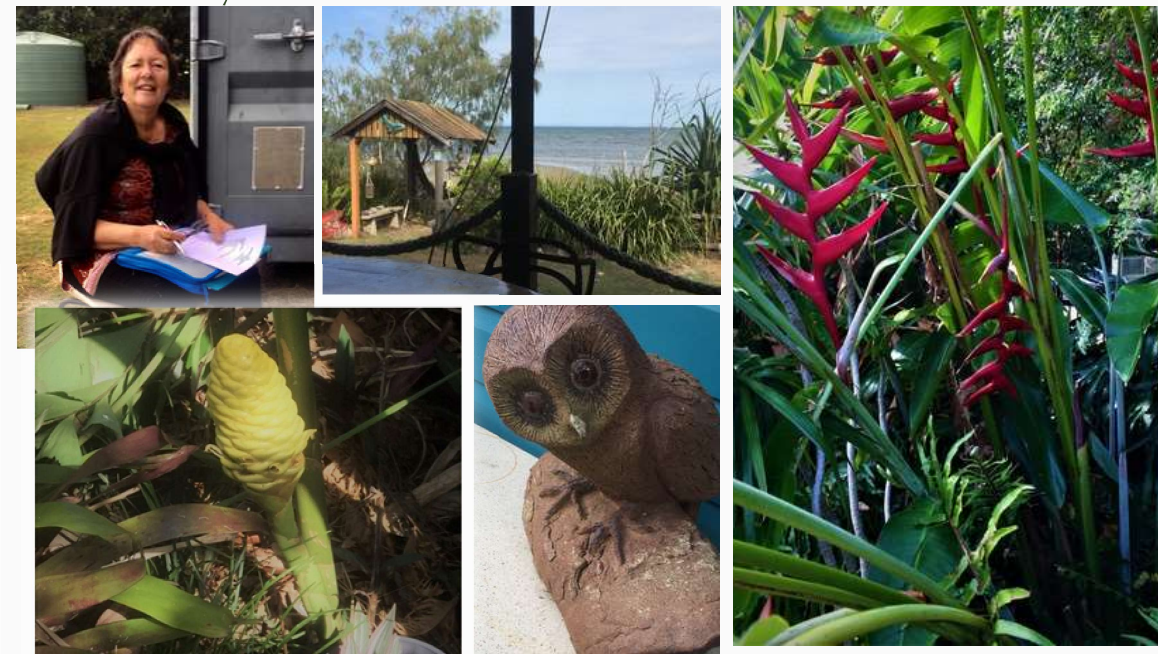
Meet quietly spoken Jill, who juggles family, a busy allied health service, an awe-inspiring tropical garden, U3A involvement, and who is BCGI's Treasurer. Her role on the committee involves a myriad of tasks and responsibilities... as well as keeping immaculate accounts, she plays a big part in liaising with suppliers, contractors and officials, yet still finds time to raise seedlings and plants, grow cuttings, and keep our market stall supplied with healthy pots of goodness from her garden.

On a particularly hot, sweaty, uncomfortable afternoon recently, I had the delightful experience of spending some time in this magic garden. Greeting me at the gate was a stand of clumping Rio Heliconias, massive, majestic and in full flower with spikes of the brightest red in stark contrast to the deep green leaves. Amongst these tall sentinels a variety of ginger plants provides contrast with heavy blooms of pink and white, and nestling below the taller plants a surprise in the form of sweet little beehive ginger plants. I lost count of the stunning varieties of ginger in this garden. As a health professional, Jill values good nourishment, evident in the plentiful herbs, vegetables, and fruit trees which all seemed to have been planted in exactly the right spot. Instinctive skills, and experience in different growing climates have culminated in a place where plants thrive under Jill's expert eye. Wandering through the lush growth, somehow the heat of the day was forgotten and a sense of well-being arose as bees buzzed happily amongst mulberry trees, gooseberry, rosellas, paw-paw, bananas.

Jill explained that when she and husband John first moved into the property, they had to cut down garden pests, such as Chinese Elm and Pepper trees which restricted the sunlight, using Cottonwood, (Red Beach Hibiscus) to provide a magnificent flowering hedge for privacy and as a buffer from the salt coastal winds. Casuarina also features as a fast growing shade tree, much loved by birds.

Jill's father, Gordon, has a particular love of orchids which nestle in odd places among beautiful pottery pieces made by Jill's late mother, Shirley. Whimsical touches are evident everywhere and even part of an old boat has been turned into a restful water feature by John. This garden has beauty as well as functionality and the family members are an essential part of this ecosystem. Such a healing place!

So, this is Jill, one of the many dedicated members whose contributions to this project have been invaluable. Top marks to the Backstage Crew! A Green Carpet perhaps, instead of the red one, to be rolled out on opening day? We already have our own OSCA, so no awards as such, just a great satisfaction in achievement and years ahead of enjoyment for the entire Community!



BEACHMERE STATE SCHOOL GARDEN

We are continually amazed by the enthusiasm for gardening and learning that the Beachmere students exhibit each week. Here Yvonne and some sun smart students are harvesting dried "Blue Lake" beans from last year's crop to plant out, making the most of the warm weather with one final crop of beans before the change of seasons. Punnets of radish ("Oriental" and "Cherry Bell") that were planted a week earlier are jumping out of the pots, ready to be planted in the garden.

GARDENING AUSTRALIA

Gardening Australia is back! In the first episode of the new season, Clarence visits a city building that has embraced the ideals of sustainability.

At 7 storeys, it is the tallest wooden building in the Southern Hemisphere.

A feature is the buildings rooftop garden which performs multiple tasks - increasing biodiversity, reducing storm water runoff and lowering the temperature of the solar panels, which has increased their performance. An amazing example of what can be achieved.



Watch this and other great episodes of Gardening Australia on ABC iView or 7:30pm Fridays on ABC.

PLANTING UPDATE

We have a growing range of food plants available at our Beachmere District Community Market stall.

Why not drop down on Saturday the 4th March and check them out? This month we have dwarf sunflowers, herbs and quite a few varieties of salvias, perfect to bring in the bees!. If there are any types of plants you are looking for, let us know and we will do our best to grow them for you.



"Life begins the day you start a garden."

Chinese Proverb

BECOME A MEMBER OF BEACHMERE COMMUNITY GARDEN INC.

Have you thought about becoming a member of BeachmereCommunity Garden? Memberships available are: Adult, Junior and Family. Check out the website for more info

E: beachmerecommunitygarden@outlook.com W: beachmerecommunitygarden.com.au

or FB: facebook.com/BeachmereCommunityGarden

CONSTRUCTION UPDATE

What a difference a week makes! after the feature concrete was completed and left to cure over the holidays, there were murmurs throughout the community - Where is the garden? Prepping the hardwood posts seemed to take forever (two weeks actually), before construction of the arbour could finally begin. The results are amazing to say the least. Our builder John's skills are on full display with the arbour ready to become a landmark of Beachmere. A big thank you to all members who have helped, from cutting timber and drilling concrete, tidying the site to bringing a coffee or cool drink to the construction team. It's great to see everyone working together for a common goal.



WAMURAN TIMBERS

Thank you local legends 

With the arbour now up and installed, we would like to thank Fulton Hogan once again for donating the funds to pay for the timber and steel brackets. Also, thanks to Kathy, Cobus and the team for their support and encouragement throughout the planning and building phases.

Rutledge drilling have generously donated their excavator for us to use in the construction of the arbour. It has definitely been a huge help lugging those big timber posts around! James and the team are keen gardeners with an amazing farm out near Boonah. They recently shared some sunflower seeds that we will raise and have at the stall soon.

Big thank you to Pete, Lisa and the crew for the excellent workmanship and speedy delivery of the steel work for the arbour. As you can see in the photos, all the holes fit perfectly! Pete was able to identify an issue with the arbour and rectify it with our engineer Ian, saving us a costly delay.

The amazing timber for the arbour was supplied by the local mill in Wamuran. The red iron bark is an extremely durable timber, it will be looking great for many years to come. Also, thank you for paying the delivery costs of the timber, it was much appreciated.



This year's theme is "Take time out for nature" - whether it's 60 seconds or 60 minutes, (or longer), please stop and think how you can make your community a better place for the plants and animals that we share it with. Find out more at www.earthhour.org.au



The fence panels have recently arrived from local manufacturer, Oxworks. We can't wait to get them up and installed.





HELPING TO RAISE FUNDS FOR BCGI IS AS EASY AS 1, 2, 3!



1 Collect eligible containers



2 Take them to your nearest container refund point



3 Donate the refund to BCGI

PLEASE USE THE ID CODE:

C10510815

if you would like to donate your recycling to our fundraising efforts.

ARVO IN THE GARDEN 26TH MARCH

A reminder to BCGI members that the 4th Sunday of the March is the next "Arvo in the garden". With construction nearing completion, we hope to have more and more events on site. Let us know of any ideas you have for workshops or demonstrations.



UN WATER
**22 MARCH
WORLD
WATER
DAY**

2023 Accelerating Change
www.worldwaterday.org



Sunday 5 March 2023

How hard is it to put rubbish in the bin? Going by the amount lying around you would think it must be pretty difficult! Check out the website to see what clean up activities have been organised for your area. Also, why not use the occasion to think of ways to minimise rubbish- the 4 R's are a good start - Reduce, re-use, recycle and re-purpose.

www.cleanup.org.au/community

For those that may not have gotten the OSCA joke in "Jill's Garden", here he is! Way more impressive than the movie award, the On Site Composting Apparatus is our beast of a composter, set up to devour BCGI members' green waste to make amazing compost for the community garden.



THIS MONTH'S COVER PHOTO

Nothing gives salad a peppery punch like radish. A quick growing vegetable, they are ready to eat in only 4-6 weeks from planting. Great as a intermediate crop, planted amongst a slower growing crop (such as winter brassicas). Their fast growth smothers weeds and keeps the soil moist and cool. Once ready for harvest they can be thinned out allowing the next crop to take over.



PHOTO OF THE MONTH

Climbing spinach in Jill's garden. Photo by Darla. Its common names of Malabar or Ceylon spinach hint at it being well suited to hot, humid conditions. High in vitamin A and C, this plant is a must have in the sub tropical vege garden.

SUPPORT THE BUSINESSES AND GROUPS SUPPORTING US

It has been amazing to see the generous support from many local (and not so local) governments, businesses and community groups that are helping to get this project off the ground. Wherever possible please support them in return.



Beachmere



Cr Mark Booth
Div 2



**BEACHMERE HISTORY
AND RESEARCH**



E: beachmerecommunitygarden@outlook.com W: beachmerecommunitygarden.com.au

FB: facebook.com/BeachmereCommunityGarden